



GMT MONTHLY MEMBERSHIP PROGRESS REPORT

Results as of: 5/31/2020

Multiple District 17

LOCATION: KANSAS

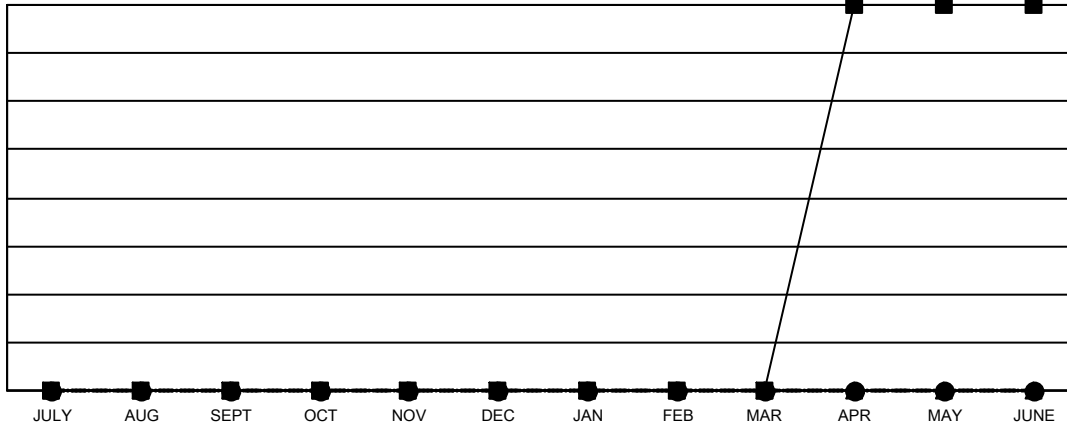
GMT: OPEN

GMT CA 1

| Clubs | | | |
|-----------------------|---------------|-----------|---------------|
| RESULTS FOR 2019-2020 | | | |
| QUARTER | NEW CLUB GOAL | NEW CLUBS | DROPPED CLUBS |
| JULY/AUG/SEPT | 0 | 0 | 2 |
| OCT/NOV/DEC | 0 | 0 | 2 |
| JAN/FEB/MAR | 0 | 0 | 2 |
| APR/MAY/JUNE | 4 | 0 | 0 |

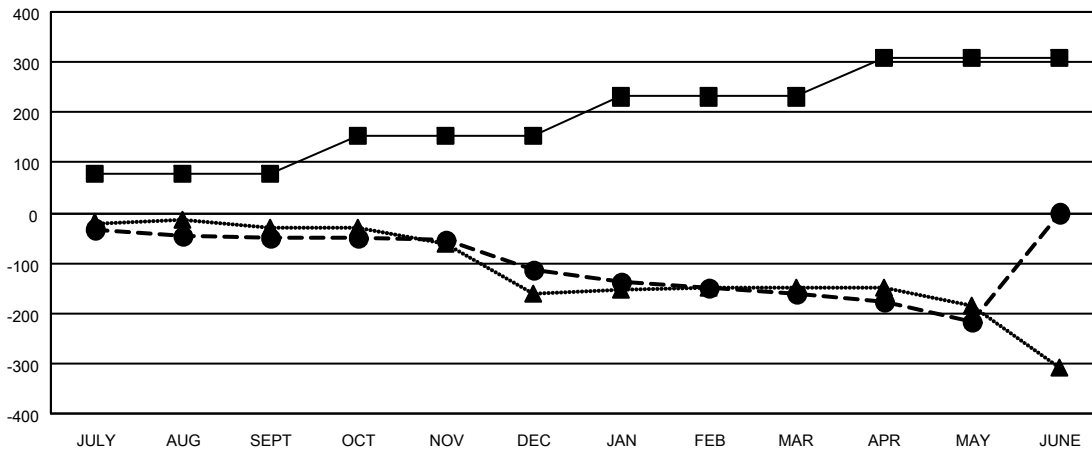
| Members | | | |
|-----------------------|------------------------|----------------------|--|
| RESULTS FOR 2019-2020 | | | |
| QUARTER | MEMBER GROWTH NET GOAL | MEMBER GROWTH ACTUAL | DROPPED MEMBERS ACTUAL (including transfers) |
| JULY/AUG/SEPT | 76 | 65 | 102 |
| OCT/NOV/DEC | 77 | 80 | 134 |
| JAN/FEB/MAR | 78 | 88 | 129 |
| APR/MAY/JUNE | 79 | 17 | 66 |

GOALS AND ACTUAL NEW CLUBS CUMULATIVE



- - CURRENT YEAR GOALS FOR NEW CLUBS
- - CURRENT YEAR ACTUAL NEW CLUBS
- ▲ - LAST YEAR ACTUAL NEW CLUBS

GOALS AND ACTUAL MEMBERS CUMULATIVE



- - MEMBER GROWTH NET GOAL
- - MEMBER GROWTH ACTUAL
- ▲ - LAST YEAR MEMBERSHIP ACTUAL

| | | |
|--|---|--|
| DROPPED CLUBS: 6 | 103 CLUBS OF 228 ADDED 1 OR MORE NEW MEMBERS | GENDER DISTRIBUTION MALE 3,135 (70.15%) FEMALE 1,334 (29.85%) |
| DROPPED MEMBERS DECEASED 67 CLUB CANCELLED 10 OTHER 354 TOTAL 431 | CLICK HERE FOR CUMULATIVE MEMBERSHIP DATA | TOTAL FAMILY UNIT MEMBERS 943 FAMILY MEMBERS PAYING HALF DUES 480 |